

STATE OF MINNESOTA, }  
COUNTY OF MURRAY, } ss.

I hereby certify that the within Instrument  
was filed in this office for record on the  
6TH day of FEBRUARY A.D. 20 19  
at 11:00 o'clock A. M., and was duly  
recorded as Document No. \_\_\_\_\_

Evelyn C. Larson  
County Recorder

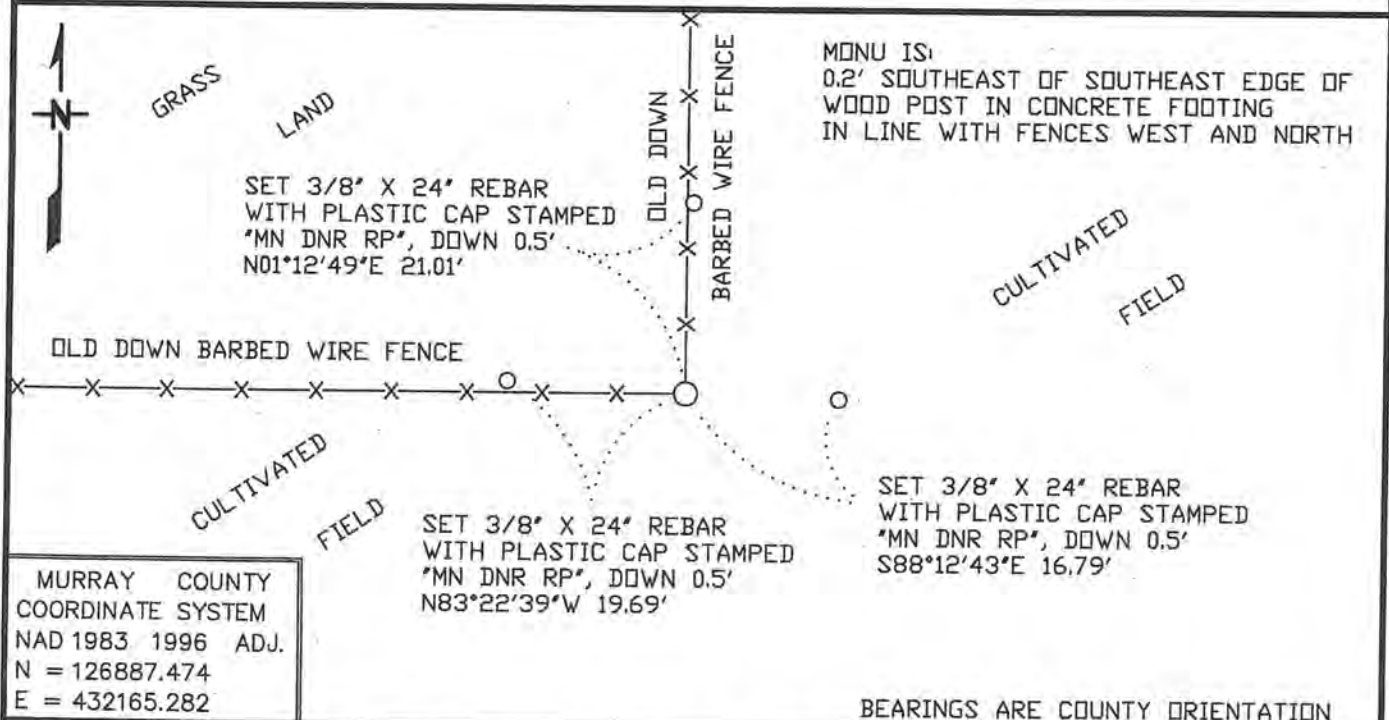
Index No. E-9

# CERTIFICATE OF LOCATION OF GOVERNMENT CORNER

NORTHEAST Corner of Section 8, Township 105 N, Range 43 W  
5TH Principal Meridian, State of Minnesota, County of MURRAY

At the corner location shown on the sketch:

- On 4/30/2018 found an IRON ROD WITH PLASTIC RLS CAP #42620, UP 0.2'  
DATE
- left monument as found,       lowered monument,       removed monument (explain)
- On \_\_\_\_\_ Placed a \_\_\_\_\_  
DATE



Statement of evidence for this corner location is on back of this page.      JAN 2019  
NPB00139

I hereby certify that this plan, specification, or report was prepared by me or under my direct supervision and that I am a duly Licensed Land Surveyor under the laws of the State of Minnesota.

SIGNATURE Bruce W. Shepperd      DATE 2/5/19      License Number 17003  
BRUCE W. SHEPPERD

Northeast Corner of Section 8, Township 105 North, Range 43 West

The DNR Division of Lands and Minerals contacted the following for survey information:

Website - [mgeo.state.mn.us](http://mgeo.state.mn.us) for GLO plat and field notes

Website - [murray-countymn.com](http://murray-countymn.com) for section and quarter section corner information

Murray County Recorder's Office

Buettel-Moseng Land Surveying, Inc. of Marshall

Ulteig Engineering

Nyberg Surveying of Alexandria

- 1866 U.S. General Land Office notes, obtained from [mgeo.state.mn.us](http://mgeo.state.mn.us), show the corner marked with a post, in a mound.
- 1905 May 27, a Surveyor's Record Book, page 166, obtained from the County Recorder's Office, which is also on Website [murray-countymn.com](http://murray-countymn.com), contains a survey in Section 4 by J. W. Woolstencraft, County Surveyor. Survey shows the following at the corner:  
"Gov. cor."  
No distances are shown to the corner.
- 1908 Plat Book for Moulton Township, obtained from the County Recorder's Office, shows east, west, north and south property divisions in the area of the corner.
- 1913 June 18, a Surveyor's Record Book, page 230, obtained from the County Recorder's Office, which is also on Website [murray-countymn.com](http://murray-countymn.com), contains a survey in Section 9 by J. W. Woolstencraft, County Surveyor. Survey shows corner but does not indicate what kind of monument was found or set. The corner is shown:  
2653 feet from the north quarter corner of Section 9
- 1926 Plat Book for Moulton Township, obtained from the County Recorder's Office, shows east, west, and north property divisions in the area of the corner.
- 2016 December 22, an ALTA/NSPS Land Title Survey for Valley View Transmission, LLC, Murray County, obtained from Nyberg Surveying, by Micah T. Radach, PS No 51816, shows that an iron rebar with plastic cap stamped "RLS 13145", "RLS 42620", or "RLS 45335" was set for the corner. The corner is shown:  
2633.82 feet from the north quarter corner of Section 9  
2662.17 feet from the east quarter corner of Section 8  
5324.34 feet from the southeast corner of Section 8
- 2018 April 30, the DNR Division of Lands and Minerals found a plastic capped iron rod, up 0.2 of a foot, at the corner. The capped iron rod was found to be:
- on the southeast edge of a wood post set in concrete in line with old down fences north and west
  - 2634.37 feet from the north quarter corner of Section 9
  - 2662.22 feet from the east quarter corner of Section 8
  - 2669.05 feet from the north quarter corner of Section 8
  - 5324.41 feet from the southeast corner of Section 8
  - 4.1 feet east of a GLO proportional measurement from the north quarter corner of Section 9 to the north quarter corner of Section 8

Analysis of the above information led the DNR Division of Lands and Minerals to conclude that the found plastic capped iron rod marks the obliterated position of the corner.